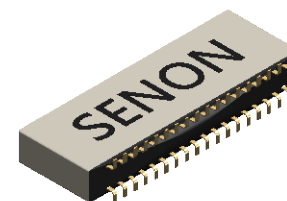


SUGGESTED PAD LAYOUT



NOTE:

DIMENSIONS IN [ ] ARE IN MILLIMETERS UNLESS OTHERWISE NOTED AND ARE FOR REFERENCE ONLY

|                                     |        |                                |                |   |             |
|-------------------------------------|--------|--------------------------------|----------------|---|-------------|
| TOLERANCES<br>UNLESS OTHERWISE NOTE |        | <b>SENONLINK</b><br>TECHNOLOGY |                | Title: (36) PIN MALE NANO<br>W/GUIDE POST HOLES<br>DUAL ROW CONNECTOR |             |
| DIMENSIONS IN                       | Inches |                                |                | DWG NO. A79026  |             |
| 2 PL D E C $\pm$                    | .01    | <b>SENONLINK</b><br>TECHNOLOGY |                | Size: A4  | Third Angle |
| 3 PL D E C $\pm$                    | .005   |                                |                | Scale: 8:1 Sheet 1 OF 1   |             |
| 4 PL D E C $\pm$                    | .0005  |                                |                | REV 0   |             |
| ANGLES $\pm$ 1°                     |        | Issued: PETER                  | DATE: 04-08-20 |   |             |